

# EPSON MS Academy

# 2024

**EPSON Deutschland GmbH**  
**Manufacturing Solutions | MS Academy**  
Halskestr. 30 | 40880 Ratingen  
**EPSON MS Academy:**  
academy.ms@epson.de  
<http://www.epson.de/robots/>

**EPSON®**  
EXCEED YOUR VISION

# Welcome to the EPSON MS Academy

Dear robot enthusiast,

Thank you for your interest in training at **EPSON MANUFACTURING SOLUTIONS ACADEMY**.

Our sophisticated training concept gives you the opportunity to train comprehensively and effectively as a specialist in Epson robot technology. A consistently limited number of participants is a prerequisite for this. Small groups enable fast and efficient learning for optimum utilisation of the many options your Epson robots can offer you.

Besides theoretical knowledge, our training centre in Ratingen also includes an extensive practical component involving real robots.



**Our recommendation:** For our current schedules, please consult our website at:  
<http://www.epson.de/robots/>

Practice sessions reinforce what has been learnt. Our trainers will take adequate time to answer your questions concisely and accurately. On request, we can also draw up a complete training concept tailored to your needs.

Would you like to gain some initial impressions about automation with Epson robots, or are you keener to learn more about the performance and capabilities of the machines? We shall also be pleased to visit you on site – complete with robot.

Our sales engineers will be ready to answer your specific questions and can usually estimate feasibilities too.

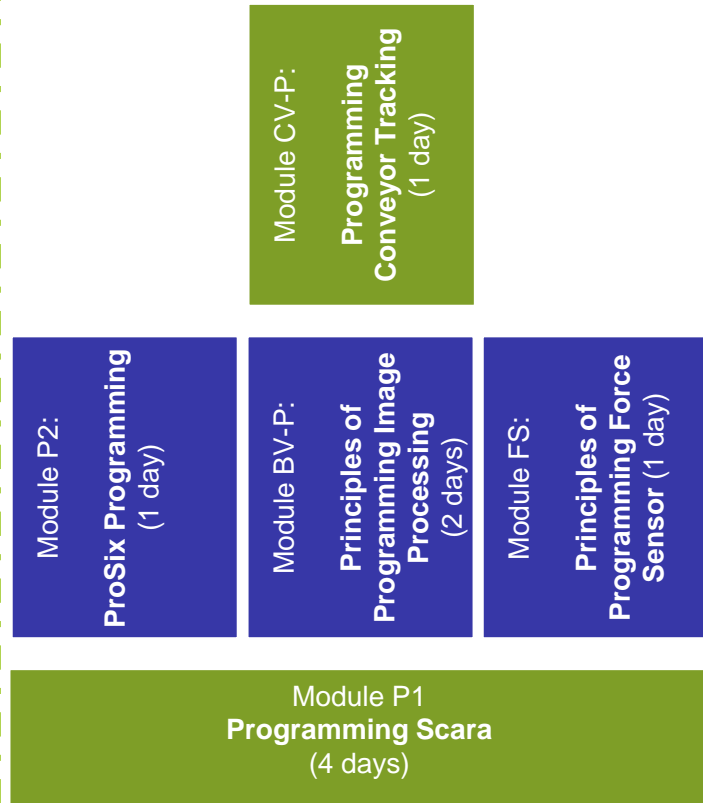
## NOT FOUND SUITABLE TRAINING?

That's no problem for us either! We shall be pleased to customise training content with you – so you and your staff can get exactly what you need.

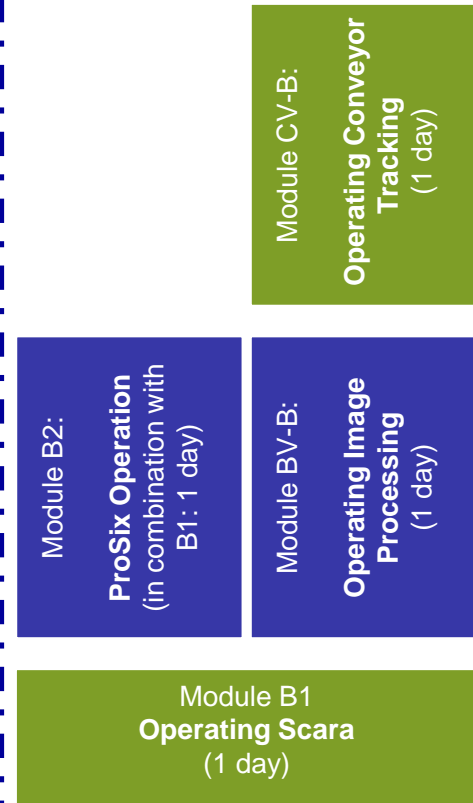
Your  
EPSON Manufacturing Solutions Team

# Step by Step to Expert Knowledge

Suitable for system integrators,  
programmers, maintenance personnel, ...



Suitable for operating staff...



**Our recommendation:** Our course modules let you shape your learning content individually so as to cover your requirements as best as possible.



**Important:** Please note that the course modules sometimes **build on one another**, thus making participation in the previous module mandatory.



EPSON MS ACADEMY

**EPSON**<sup>®</sup>  
EXCEED YOUR VISION

# EPSON RC+ Programming Training

Course module  
**P1+2**

The participant will acquire advanced user knowledge of RC+ programming on the EPSON robot control and can develop and independently implement applications from the handling technology.

**Target group:** Programmer, maintenance personnel

**Models:** Scara robots of the G / T / LS / RS series as well as 6-axis robots (ProSix)  
Controls: RC90 / RC180 / RC700(-A)

**Content:**

- Working with RC+ software and the RC+ simulator
- Various coordinate systems of the robot
- Teaching, editing and calculating positions
- Travel commands, commands for palletising
- Handling of variables, digital I/O handling, remote functions (Fieldbus)
- Program structuring & control, multitasking,
- The training offers an interesting alternation between theory and practical exercises.

**Duration:**

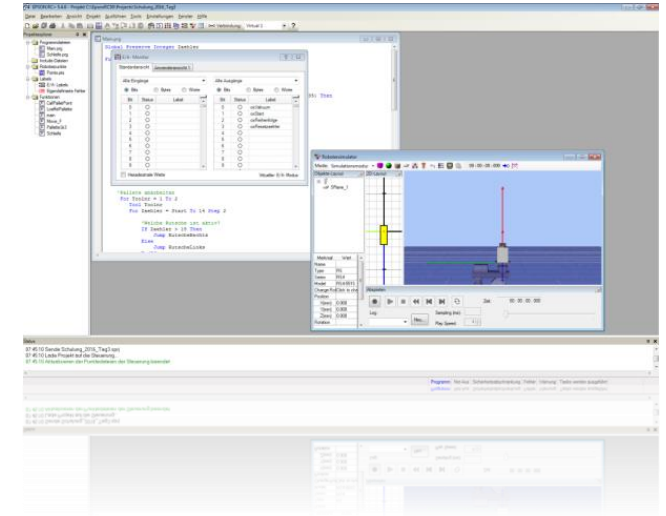
Module P1	Scara:	4 days (usually Mon.-Thurs.)
Module P2	ProSix:	+ 1 extra day (Friday)

**Price:**

Module P1	Scara:	1.720 euros / person for 4 days
Module P2	ProSix:	2.150 euros / person for 5 days

**Max. number of participants:** 8 participants

**Prerequisites:** Basic knowledge of a high-level programming language such as BASIC, C++ or experience in PLC programming



**Our recommendation:** Bring your **own laptop** to the training. You can install the software directly at us – so can have your work tool ready for use straight away.

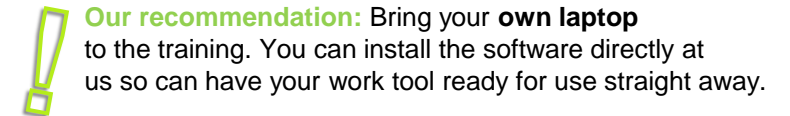
**For your information:** The additional day for the ProSix series can also be booked as a single course day.

All participation fees apply for our training centre in Ratingen plus statutory VAT. Lunch and drinks are included in the participation fees.

**EPSON®**  
EXCEED YOUR VISION

Course module  
**BV-P**

<b>Target group:</b>	Programmer, maintenance personnel
<b>Models:</b>	CV1 / CV2
<b>Content:</b>	<ul style="list-style-type: none"><li>▪ Principles of image processing</li><li>▪ Introduction to hardware</li><li>▪ Settings in EPSON RC+</li><li>▪ Use of various tools (Blob, Correlation, Geometric)</li><li>▪ Calibration of a stationary camera</li><li>▪ Programming (VRUN, VGET, VSET)</li><li>▪ The training offers an interesting alternation between theory and practical exercises.</li></ul>
<b>Duration:</b>	2 days
<b>Price:</b>	860 euros / person
<b>of participants:</b>	4 participants
<b>Prerequisites:</b>	Course module P1 "RC+ Programming Training"



# EPSON RC+ ConveyorTracking *for Programmers*

Course module  
**CV-P**

Participants acquire basic knowledge for commissioning, programming and calibrating the conveyor tracking system in conjunction with the EPSON VisionGuide image processing.

**Target group:** Programmer, maintenance personnel

**Content:**

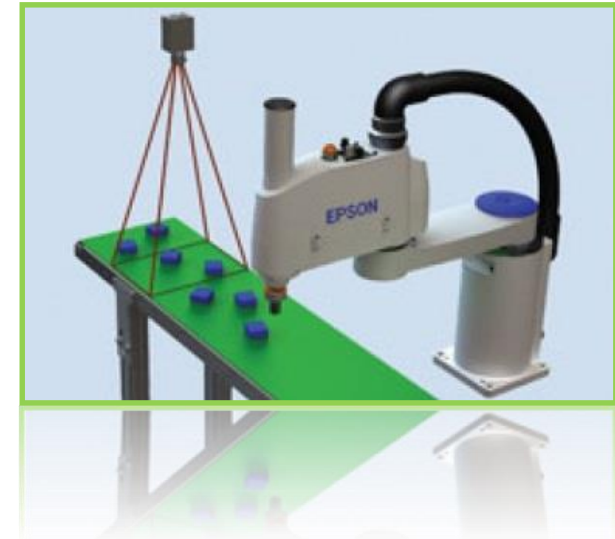
- Introduction to hardware
- Settings in EPSON RC+
- Explanation of sensor tracking and camera tracking
- Calibrating a camera outside the robot working area
- Calibrating a conveyor tracking system
- Programming commands
- Program examples for sensor tracking and camera tracking
- The training offers an interesting alternation between theory and practical exercises.

**Duration:** 1 day

**Price:** 430 euros / person

**Max. number of participants:** 4 participants

**Prerequisites:** Course module P1 "RC+ Programming Training" plus Course module BV-P "EPSON VisionGuide for Programmers"



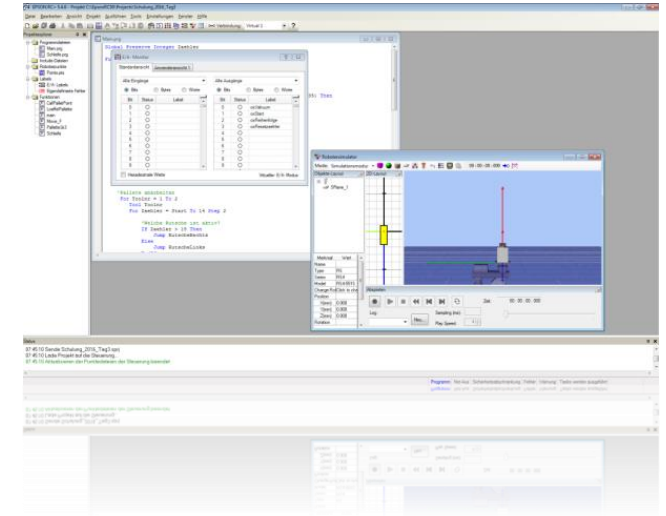
**Our recommendation:** Bring your **own laptop** to the training. You can install the software directly at us – so can have your work tool ready for use straight away.

# EPSON RC+ Simulator/Design Training

Course module  
**SK**

Participants acquire basic knowledge in working with the RC+ programming software, robot principles as well as basic recommendations for designing a robot cell.

- Target group:** Project planning, design (mechanics & electrics)
- Models:** Scara robots of the G / T / LS / RS series as well as 6-axis robots (ProSix)  
Controls: RC90 / RC180 / RC700(-A)
- Content:**
- Presentation of the main components in the robot system and kinematic structure of the manipulator
  - Aspects of safety technology and accident prevention
  - Working with the simulator
  - Explanation of the fundamental commands for motion control with the most important additional functions
  - Mechanical structure of a robot cell
  - Exercises on the content learned
- Duration:** 2 days
- Price:** 860 euros / person
- Max. number of participants:** 8 participants
- Prerequisites:** None



**Our recommendation:** Bring your **own laptop** to the training. You can install the software directly at us – so can have your work tool ready for use straight away.



# EPSON Maintenance Training 2-day

Course module  
**W2**

Participants can correctly commission the EPSON robot system with the robot control as well as plan maintenance measures on the manipulator and control and carry out repairs independently.

**Target group:** Maintenance, system operator, control system, installation and commissioning, design and mechanics

**Models:** Scara robots of the G / LS /LS-B / RS series  
Controls: RC90(-B) / RC180 / RC700(-A)

**Content:**

- Presentation of the components in the robot system and kinematic structure of the manipulator
- Aspects of safety technology and accident prevention
- Explanation of the basic commands for motion control
- Various options for setting up room points
- Maintenance of the robot control on the module level
- Maintenance of the manipulator including disassembly of the most important components
- Calibrating the robot system
- Error diagnostics and contacting EPSON Support

**Duration:** 2 days

**Price:** 860 euros per person

**Max. number of participants:** 3 participants

**Prerequisites:** None



All participation fees apply for our training centre in Ratingen plus statutory VAT. Lunch and drinks are included in the participation fees.

**EPSON®**  
EXCEED YOUR VISION



# EPSON Maintenance Training 3-day

Course module  
**W3**

Participants can correctly commission the EPSON robot system with the robot control as well as plan maintenance measures on the manipulator and control and carry out repairs independently.

**Target group:** Maintenance, system operator, control system, installation and commissioning, design and mechanics

**Models:** Scara robots of the G / LS /LS-B / RS series  
Controls: RC90(-B) / RC180 / RC700(-A)

**Content:**

- Presentation of the components in the robot system and kinematic structure of the manipulator
- Aspects of safety technology and accident prevention
- Explanation of the basic commands for motion control
- Various options for setting up room points
- Maintenance of the robot control on the module level
- Maintenance of the manipulator including disassembly of the most important components
- Calibrating the robot system
- Error diagnostics and contacting EPSON Support

**Duration:** 3 days

**Price:** 1.290 euros per person

**Max. number of participants:** 4 participants

**Prerequisites:** None



**Your advantage:** We train two systems in one: thus e.g. G series and RS series training can be organised as a single training session. **Your saving:** One training day per participant.

All participation fees apply for our training centre in Ratingen plus statutory VAT. Lunch and drinks are included in the participation fees.

**EPSON®**  
EXCEED YOUR VISION

Participants can safely operate an Epson robot system, teach room points, log and rectify simple faults.

- Target group:** System operators adjustment technicians, installation and commissioning, technical sales
- Models:** Scara robots of the G / T / LS(B) / RS series as well as 6-axis robots (ProSix)  
Controls: RC90 / RC90-B / RC180 / RC700(-A)
- Content:**
- Presentation of the main components in the robot system (control and manipulator)
  - Aspects of safety technology and accident prevention
  - Explanation of the coordinate system
  - Teaching points and travel commands
  - Operating the robot with teach pendant and operation panel
  - Information on recommended activities (backup, reference point and maintenance)
- Duration:** 1 day
- Price:** 430 euros per person
- Max. number of participants:** 6 participants
- Prerequisites:** None



# EPSON VisionGuide *for Operators*

Course module  
**BV-B**

Participants acquire basic knowledge of EPSON image processing for maintaining, repairing and commissioning the system.

**Target group:** Maintenance personnel

**Models:** CV1 / CV2

**Content:**

- Principles of image processing
- Introduction to hardware
- Settings in EPSON RC+
- Replacing components
- Calibration of a stationary camera
- The training offers an interesting alternation between theory and practical exercises.

**Duration:** 1 day

**Price:** 430 euros / person

**Max. number of participants:** 4 participants

**Prerequisites:** Course course module B1 "EPSON RS Operator Training"



**Our recommendation:** Bring your **own laptop** to the training. You can install the software directly at us – so can have your work tool ready for use straight away.

# EPSON RC+ ConveyorTracking *for Operators*

Course module  
**CV-B**

Participants acquire basic knowledge for repairing, replacing and calibrating the conveyor tracking system in conjunction with the EPSON VisionGuide image processing.

**Target group:** Maintenance personnel

- Content:**
- Introduction to hardware
  - Settings in EPSON RC+
  - Explanation of sensor tracking and camera tracking
  - Calibrating a camera outside the robot working area
  - Calibrating a conveyor tracking system
  - The training offers an interesting alternation between theory and practical exercises.

**Duration:** 1 day

**Price:** 430 euros / person

**Max. number of participants:** 4 participants

**Prerequisites:** Course module B1 "EPSON RS Operator Training" plus  
Course module BV-B "EPSON VisionGuide for Operators"



**Our recommendation:** Bring your **own laptop** to the training. You can install the software directly at us – so can have your work tool ready for use straight away.

# Our small print

## REGISTRATION

Registrations and cancellations must be made in writing. Please use the attached form for this:

Email: [academy.ms@epson.de](mailto:academy.ms@epson.de)

Or visit the website of our EPSON MS Academy at:

<https://www.epson.de/robots/>

A reservation can only be made after presenting

the written order. We reserve the right to postpone the courses offered if the number of participants is too small (< 3 participants), even after confirmation of registration.

A cancellation on your part must be submitted in writing to the above address. The processing fee is 20% of the course fees in the event of a cancellation up to 14 days before the start of the course. After this, the cancellation fee will be 50% of the course fee. You naturally have the option of appointing a substitute participant free of charge.

The **participation fees** include:

- Training
- Training documents
- Lunch
- Drinks

Arrival and departure costs as well as any hotel expenses must be borne by the participant.

The training documents will be handed out at the

start of the course and cannot be sent in advance. You can find a list of convenient hotels that can be booked in the attachment.

Unfortunately, the course schedules might also occur during the period of the Messe Düsseldorf trade fair. We therefore recommend making a hotel reservation as early as possible.

After completing a course, the participant's qualification will be confirmed with a certificate.

To enable participants to arrive on the first day of the course, the courses will begin at 9:30 am. The following days will then start from 9 am onwards. The course day usually ends between 4 pm and 5 pm.

We shall be pleased to adapt the course duration on the arrival day after discussion and agreement with participants so as to ensure a relaxed arrival.

# Registration for the EPSON Robot Training

## Booked training

- ☐ Programming Training G/LS/RS/T3 Series/ Extra day 6-axle \*)  
Control RC90/RC180/ RC620/RC700-A \*)
- ☐ Repair and Maintenance Training SCARA: G3 Series /G6/G10/G20 Series/ RS Series/ LS Series
- ☐ Control RC90/RC180/ RC620/RC700-A \*)
- ☐ Maintenance Training ProSix : C3 / C4 Series / C8 Series / S Series / Control RC180/ RC620/RC700-A \*)
- ☐ Optional Training Image Processing (Vision) ☐ Programmers ☐ Maintenance
- ☐ Optional Training Conveyor Tracking ☐ Programmers ☐ Maintenance ☐
- ☐ Operator Training G/LS/RS Series with Control RC90/RC180/ RC620/RC700-A \*)  
Simulator / Designer Training

\* Please indicate robot and control type (underline robot type above)

Please fill out this form fully and send it by email to [order.ms@epson.de](mailto:order.ms@epson.de)

### Your data

Company:.....  
.....

Address:.....

Phone:..... Fax:.....Department:.....

You order number:.....

**Your email address** (important for the confirmation)

.....

## Training schedules

Beginning:..... End:.....CW:.....

\_\_\_\_\_  
Date and signature

## Names of participants

Family name	First name	Company	Position

# Precise House Düsseldorf Airport

## Highlights



Kostenloser  
Parkplatz



Tolles Essen



Prima  
Frühstück



Guter Service



Am Schimmersfeld 9, 40880 Ratingen

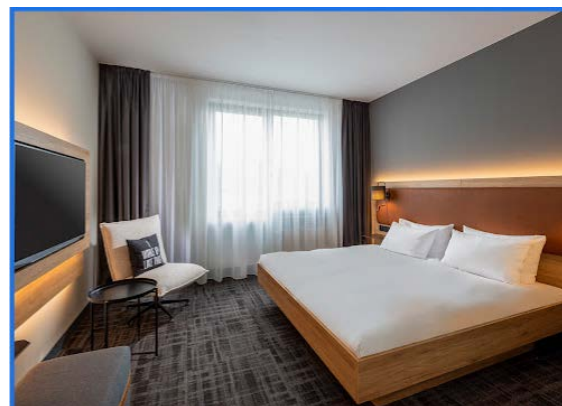


[precisehotels.com](https://www.precisehotels.com)



02102 4270

Direction Epson MS Academy:  
approx. 9 min by foot  
approx.. 2 min by car





# Best Western Hotel Breitbach

## Highlights



Kostenloser  
Parkplatz



Tolles Essen



Prima  
Frühstück



Beste Lage



Stadionring 1, 40878 Ratingen



[bestwestern.de](https://bestwestern.de)



02102 10020

Direction Epson MS Academy:  
approx. 6 min by car



# Sure Hotel by Best Western Ratingen



Angerstraße 20, 40878 Ratingen



[bestwestern.de](https://bestwestern.de)



02102 85630

Direction Epson MS Academy:  
approx. 6 min by car



# Leonardo Hotel Düsseldorf Airport - Ratingen

## Highlights



Fitnessraum



Luxuriöse  
Atmosphäre



Guter Service



Broichhofstraße 3, 40880 Ratingen



leonardo-hotels.de



02102 4560

Direction Epson MS Academy:  
approx. 6 min by car



# Hotel Am Düsseldorfer Platz - Ratingen

## Highlights



Kostenloser  
Parkplatz



Prima  
Frühstück



Beste Lage



Guter Service



Düsseldorfer Pl. 1-3, 40878 Ratingen



[hotel-am-duesseldorfer-platz.de](http://hotel-am-duesseldorfer-platz.de)



02102 20180

Direction Epson MS Academy:  
approx. 7 min by car





# Hotel Barbarossa Classic Ratingen

## Highlights



Kostenloser  
Parkplatz



Tolles Essen



Prima  
Frühstück



Beste Lage



Poststraße 68, 40878 Ratingen



[barbarossa-classic.com](http://barbarossa-classic.com)



02102 7033588

Direction Epson MS Academy:  
approx. 10 min by car

